

TONBRIDGE & MALLING BOROUGH COUNCIL



EXECUTIVE SERVICES

Chief Executive

Julie Beilby BSc (Hons) MBA

Gibson Building
Gibson Drive
Kings Hill, West Malling
Kent ME19 4LZ
West Malling (01732) 844522

NB - This agenda contains proposals, recommendations and options. These do not represent Council policy or decisions until they have received proper consideration through the full decision making process.

Contact: Committee Services
committee.services@tmbc.gov.uk

7 March 2014

To: MEMBERS OF THE JOINT TRANSPORTATION BOARD
(Copies to all Members of the Council)

Dear Sir/Madam

Your attendance is requested at a meeting of the Joint Transportation Board to be held in the Civic Suite, Gibson Building, Kings Hill, West Malling on Monday, 17th March, 2014 commencing at 7.30 pm

Yours faithfully

JULIE BEILBY

Chief Executive

A G E N D A

PART 1 - PUBLIC

1. Apologies for absence
2. Declarations of interest
3. Minutes

5 - 8

To confirm as a correct record the Notes of the meeting of the Joint Transportation Board held on Monday 2 December 2013

Matters for recommendation to the Borough Cabinet

- | | | |
|----|---|---------|
| 4. | Parking Action Plan | 9 - 12 |
| 5. | Tonbridge Town Centre Transport Strategy - Update | 13 - 16 |

Matters for Decision

- | | | |
|----|--|---------|
| 6. | B245 London Road Junction with Dry Hill Park Road - Pedestrian Crossing Improvements | 17 - 22 |
| 7. | Safe and Sensible Street Lighting - Update | 23 - 24 |
| 8. | Find and Fix - Weather Damage Repairs 2014 | 25 - 26 |

Matters submitted for Information

- | | | |
|-----|---|---------|
| 9. | Traffic Schemes, S106 Programme and Member Highway Fund Schemes | 27 - 38 |
| 10. | Highway Works Programme 2013/14 | 39 - 62 |
| 11. | Urgent Items | |

Any other items which the Chairman decides are urgent due to special circumstances and of which notice has been given to the Chief Executive.

Matters for consideration in Private

- | | | |
|-----|-------------------------------|--|
| 12. | Exclusion of Press and Public | |
|-----|-------------------------------|--|

The Chairman to move that the press and public be excluded from the remainder of the meeting during consideration of any items the publication of which would disclose exempt information.

PART 2 - PRIVATE

- | | | |
|-----|--------------|--|
| 13. | Urgent Items | |
|-----|--------------|--|

Any other items which the Chairman decides are urgent due to special circumstances and of which notice has been given to the Chief Executive.

MEMBERSHIP

Cllr Mrs S Murray (Chairman)
Mr C Smith (Vice-Chairman)

Cllr D A S Davis
Cllr N J Heslop
Cllr Mrs F A Kemp
Cllr R D Lancaster
Cllr Mrs A S Oakley
Cllr A K Sullivan

Mr M Balfour
Mrs V Dagger
Mrs T Dean
Mrs S Hohler
Mr P Homewood
Mr R Long

This page is intentionally left blank

TONBRIDGE AND MALLING BOROUGH COUNCIL

JOINT TRANSPORTATION BOARD

Monday, 2nd December, 2013

Present: Borough Council Members of the Board
Cllr Mrs S M Murray (Chairman), Cllr D A S Davis, Cllr N J Heslop,
Cllr Mrs F A Kemp, Cllr R D Lancaster and Cllr A K Sullivan.

County Council Members of the Board
Mr C Smith (Vice-Chairman), Mr M Balfour, Mrs V Dagger, Mrs S Hohler
and Mr R Long.

Borough Councillors Mrs Anderson, Atkins, Balcombe, Baldock, Bolt,
Ms Branson, Cure, Mrs Luck, Luker and Miss Moloney were also present
pursuant to Council Procedure Rule No 15.21.

Apologies for absence were received from Borough Councillor
Mrs Oakley and County Councillor Homewood.

PART 1 - PUBLIC

**JTB
13/036** **DECLARATIONS OF INTEREST**

There were no declarations of interest made.

**JTB
13/037** **MINUTES**

RESOLVED: That the Minutes of the meeting of the Joint
Transportation Board held on 23 September 2013 be approved as a
correct record and signed by the Chairman.

**JTB
13/038** **PARKING ACTION PLAN**

Decision Notice D130143MEM

The report of the Director of Planning, Housing and Environmental
Health gave an update on the phased approach undertaken to
on-street parking management with a focus on the current initiatives,
Phase 7 and the review of the Snodland Local Parking Plan.

RESOLVED: That the following be commended to the Borough
Council Cabinet

(1) the 'Recommendation' stated for each location within Annex 1 and
Annex 3 be endorsed; and

(2) the endorsed proposals proceed to formal consultation, with any arising objections reported to the next meeting of the Board for consideration.

**JTB
13/039**

TONBRIDGE TOWN CENTRE TRANSPORT STRATEGY - UPDATE

Decision Notice D130144MEM

The joint report of the Director of Highways and Transportation and the Director of Planning, Housing and Environmental Health provided an update on the revised strategy following the informal briefing session for Members and identified appropriate ways in which the strategy would be taken forward.

RESOLVED: That the following be commended to the Borough Council Cabinet

(1) the work to date and the next steps, as set out in the report, be endorsed; and

(2) the County and Borough Council officers work together to establish a timetable for the resolution of the traffic light issue in respect of the 'Star and Garter' junction.

**JTB
13/040**

TONBRIDGE AND MALLING CYCLING STRATEGY

Decision Notice D130145MEM

Consideration was given to the Tonbridge and Malling Cycling Strategy which had been prepared by officers from Kent County Council, working in partnership with colleagues from Tonbridge and Malling Borough Council, the sustainable transport charity, Sustrans, and local cyclists. The report summarised the responses received to the public consultation held between May and June 2013.

A number of Members expressed concern about the phraseology used within the strategy, set out at Annex 1 to the report, which gave an impression that the strategy would be a policy statement rather than provide guidance to the decision making process. Kent County Council offered to clarify the text of the document to ensure that it could be adopted as a material consideration for the purposes of development control.

RESOLVED: That the following be commended to the Borough Council Cabinet

The revised Tonbridge and Malling Cycling Strategy be submitted to the next meeting of the Borough Council's Planning and Transportation Advisory Board for consideration of its incorporation into the Local Plan Process.

**JTB
13/041**

**B245 LONDON ROAD JUNCTION WITH DRY HILL PARK ROAD -
PEDESTRIAN CROSSING IMPROVEMENTS**

The report of the Head of Transportation, Kent Highways and Transportation, summarised the consultant's findings regarding the options for improving the pedestrian crossing facilities at the Dry Hill Park Road junction with the B245 London Road, Tonbridge. The Board was disappointed that the report recommended that it was not possible to install additional pedestrian crossing facilities and

RESOLVED: That Kent County Council be invited to look again at a pedestrian crossing and submit a further report to the next meeting of the Joint Transportation Board.

MATTERS SUBMITTED FOR INFORMATION

**JTB
13/042**

TRAFFIC SCHEMES

The report of the Head of Transportation, Kent Highways and Transportation, provided a summary of the current position on a number of traffic and transportation initiatives in the Borough and identified those funded from each County Member Highway Fund.

**JTB
13/043**

HIGHWAY WORKS PROGRAMME 2013/14

The report of KCC Highways and Transportation provided an update on schemes programmed for construction by the County Council in 2013/14.

MATTERS FOR CONSIDERATION IN PRIVATE

**JTB
13/044**

EXCLUSION OF PRESS AND PUBLIC

No matters were considered in private.

The meeting ended at 2129 hours

This page is intentionally left blank

TONBRIDGE & MALLING BOROUGH COUNCIL

JOINT TRANSPORTATION BOARD

17 March 2014

Report of the Director of Planning, Housing and Environmental Health

Part 1- Public

Matter for Recommendation to Borough Cabinet - Non-Key Decision (Decision may be taken by the Cabinet Member)

1 PARKING ACTION PLAN

Summary

This report updates Members on the phased approach to on-street parking management with a focus on the current initiatives.

1.1 Introduction

1.1.1 The Borough Council's approach to on-street parking management has been divided into phases so economies of scale can be applied and work is delivered in a timely manner. In recent months we have also been undertaking a review which would enable enforcement of Taxi ranks across the Borough by our Civil Enforcement Officers.

1.2 Phase 7 of the on-street Parking Action Plan and the Snodland Parking Review

1.2.1 We are currently carrying out formal consultation on the changes to parking restrictions that had previously been reported to the December meeting of the Joint Transportation Board, for consideration prior to implementation.

1.2.2 The formal consultation on 69 different schemes across the Borough closes on the 30th March, and any comments or objections received will be reported to the June meeting of the Board.

1.3 Taxi Ranks

1.3.1 We are taking the opportunity, presented by a review of the traffic orders, to implement a change to the legal structures supporting the on-street taxi ranks in the Borough. Currently our on-street taxi ranks are "appointments" made under the Local Government Miscellaneous Provisions Act.

- 1.3.2 However the Act specifies that enforcement can only be done by the police or traffic wardens - a situation that predates the decriminalization of parking enforcement.
- 1.3.3 Since parking was decriminalised in 2005, enforcement of parking contraventions in taxi ranks has not been possible by the Borough's Civil Enforcement Officers. To address this we are taking the opportunity to define the existing on-street taxi ranks as "parking places for taxis" and to extinguish the existing on-street taxi rank appointments.
- 1.3.4 This will enable the Council's Civil Enforcement Officers to address parking contraventions in taxi facilities as part of their normal duties. There are no changes to the extents or times of operation of the taxi facilities as part of the proposals.

1.4 East Malling Parking Review

- 1.4.1 We have been reviewing the restrictions that were introduced as part of the East Malling Parking Review and have prepared a package of minor amendments in consultation with the local members for that area. The proposals are about to be taken to residents for their views as "informal" consultation.
- 1.4.2 The responses from the informal consultation will then be discussed with the local members and be adjusted as appropriate. We will then proceed to formal consultation, with the outcome reported to the June meeting of the Board.

1.5 West Malling Parking Review

- 1.5.1 The West Malling Steering Group has asked that we prepare proposals for new parking restrictions in the Norman Road, Offham Road and A20 London Road areas of West Malling. We will be taking proposals to informal consultation with residents, then reporting responses back to the Steering Group, prior to undertaking any formal consultation.

1.6 Borough Green – Parking Reviews

- 1.6.1 Our parking programme of work includes a review of particular aspects of the Local Parking Plan for Borough Green with local members at which point we will consider any alterations to the existing parking regime at specific locations identified.

1.7 Hadlow – Local Parking Plan

- 1.7.1 The request to develop a Local Parking Plan for Hadlow was put on hold several years ago pending the Parish Council moving forward with a redesign project of the central area of the village. The Parish Council is now ready to consider options to address parking issues in various areas.

- 1.7.2 An assessment of the current parking restrictions and an overall review of the requests and aspirations of the Parish Council can be considered, in consultation with local Members, following Phase 7 and the other commitments listed above. We are all conscious that traders have requested a review of the potential for short term “shoppers” parking and we will explore any opportunities that may arise.

1.8 Review of off-street parking charges and the new off-street Parking Order

- 1.8.1 We have recently advertised a replacement of the Council's Off-Street Parking Order, revising some off-street parking charges already agreed and introducing new restrictions in the Swanmead Way car park in Tonbridge and the town centre car park in West Malling.
- 1.8.2 The formal consultation on the changes closed on 14th March and the any comments received will be considered by the Borough Council Cabinet Member for Planning and Transportation. Due to the recent ending of the consultation a oral update of the outcome will be made to the Board.

1.9 Legal Implications

The on-street parking service is undertaken by the Borough Council on behalf of the County Council under the terms of the formal legal agreement.

1.10 Financial and Value for Money Considerations

- 1.10.1 Funding to implement the parking action plan is provided within existing approved Borough Council Budgets.

1.11 Risk Assessment

- 1.11.1 The assessment and consultation process applied to parking management provides the assurance that the Borough Council has the will and ability to adapt the Parking Plans in the light of circumstances to ensure that it achieves a best balance of local parking needs. A regular review of the schemes is crucial to ensure that we can correctly and effectively manage on street parking in these areas as the proposals are either introduced for safety reasons or to provide a more appropriate balance of parking needs.

1.12 Equality Impact Assessment

See 'Screening for equality impacts' table at end of report.

1.13 Recommendations

- 1) That the programme and actions set out in the report **BE ENDORSED**.

The Director of Planning, Housing and Environmental Health confirms that the proposals contained in the recommendation(s), if approved, will fall within the Council's Budget and Policy Framework.

Background papers:

contact: Mike O'Brien

Nil

Steve Humphrey

Director of Planning, Housing and Environmental Health

Screening for equality impacts:		
Question	Answer	Explanation of impacts
a. Does the decision being made or recommended through this paper have potential to cause adverse impact or discriminate against different groups in the community?	No	All of the proposals are in line with national guidelines and re-iterates advice set out within the Highway Code. Any such parking that is affected by these changes is already contrary to that advice. There is no established right to park on the public highway, and the proposals all assist the maintenance of the right of access along the highway and to properties.
b. Does the decision being made or recommended through this paper make a positive contribution to promoting equality?	Yes	The proposals should ease traffic movements and improve access to properties for all Road users.
c. What steps are you taking to mitigate, reduce, avoid or minimise the impacts identified above?		n/a

In submitting this report, the Chief Officer doing so is confirming that they have given due regard to the equality impacts of the decision being considered, as noted in the table above.

TONBRIDGE & MALLING BOROUGH COUNCIL

JOINT TRANSPORTATION BOARD

17 March 2014

Joint Report of the Director of Highways and Transportation and the Director of Planning, Housing and Environmental Health

Part 1- Public

Matter for Recommendation to Borough Cabinet - Non-Key Decision (Decision may be taken by the Cabinet Member)

1 TONBRIDGE TOWN CENTRE TRANSPORT STRATEGY – UPDATE

Summary

This report provides an update on progress with the revised Town Centre Transport Strategy for Tonbridge, including the proposed streetscape and traffic management improvements for the lower High Street; the outline designs for which were endorsed by the Joint Transportation Board on 2 December last year following some helpful discussion amongst Members.

1.1 Background

- 1.1.1 It was agreed by the Joint Transportation Board (JTB) in December that Kent County Council (KCC) would progress the agreed streetscape and traffic management improvements for the lower High Street to their detailed design and costing stage in the New Year. The JTB also requested an update on the 'health check' of key signalised junctions within Tonbridge Town Centre, which is being carried out by KCC's Traffic Systems Team. Each of these work streams has since been commissioned and a detailed progress update will be provided in the main body of this report.

1.2 Progress to Date

Signal Health Check

- 1.2.1 The Traffic Systems Team commissioned baseline traffic counts at each of the signalised junctions shortly after the last JTB meeting. These were subsequently undertaken during early February, which represents the first 'traffic neutral' month of the year for data collection purposes following the Christmas and New Year holidays. The counts took the form of a video survey, which will enable the Traffic Systems Team to identify the key factors influencing junction performance.

- 1.2.2 The data will be used to model possible improvements to signal timings and synchronisation and will establish whether or not physical layout changes are required at any or all of the junctions. This work will be undertaken over the coming weeks and it is anticipated that KCC officers will be in a position to inform Members of its conclusions by the end of March.

High Street improvements

- 1.2.3 KCC commissioned its design consultant, Amey, to progress the necessary detailed design and costing work for the lower High Street improvement scheme in January. To date, Amey has undertaken baseline traffic counts and pedestrian crossing surveys, which will inform the type and location of future crossing facilities and speed limits. An Environmental Scoping Assessment has also been produced; the outcomes of which will be fed in to the design process as appropriate.
- 1.2.4 Members will recall that KCC's Structures Team is to undertake waterproofing work to the Little Bridge during March. Having investigated the potential to deliver the agreed improvements to this section of the High Street in tandem with this project, it was established that it would be impractical to do so, due to the long lead-in time for the delivery of the required paving materials and the limited opportunities available to consult with local Members and other stakeholders.
- 1.2.5 Initial meetings have been held between KCC's project manager and Tonbridge and Malling Borough Council (TMBC)'s Chief Engineer, Chief Planning Officer and Conservation Architect regarding the specification of paving materials for the lower High Street. One of the options discussed was to install clay pavers matching those recently used at the Watergate, although this matter will be discussed in greater detail with local Members in due course.
- 1.2.6 Further work has been undertaken by KCC to identify potential funding options for the scheme. This has included the preparation of a bid to the Government's Single Local Growth Fund, which will be formally submitted by the South East Local Enterprise Partnership later this year. Discussions have also been held with the County Council's Roadworks Team with a view to securing contributions arising from Lane Rental income. KCC and TMBC officers will continue to work with Sainsbury's to ensure that the forthcoming redevelopment of the Botany area and Bradford Street car park also contribute positively to the regeneration of the High Street.

1.3 Next Steps

- 1.3.1 Amey's detailed design commission will continue until the end of March and will include a drainage survey, liaison with Statutory Undertakers and discussion with KCC's highway contractor, Enterprise, to determine the optimum construction programme. The outcome of this work will be presented at the next JTB meeting.

1.3.2 The County Council's Roadworks Coordination Team has confirmed that major gas main replacement works are scheduled to take place in north Tonbridge during this year's school summer holidays and these considerations, together with the likelihood that external funding will not become available before the end of the year, suggest that delivery of the High Street improvements should be programmed for the 2015/16 financial year.

1.4 Legal Implications

1.4.1 None at this stage.

1.5 Financial and Value for Money Considerations

1.5.1 None at this stage.

1.6 Risk Assessment

1.6.1 Not required.

1.7 Equality Impact Assessment

1.7.1 See 'Screening for equality impacts' table at end of report

1.8 Recommendations

1.8.1 The Board **NOTES** the work to date and the next steps as set out in the report.

The Director of (Kent) Highways and Transportation and the Director of Planning, Housing and Environmental Health confirms that the proposals contained in the recommendation(s), if approved, will fall within the Council's Budget and Policy Framework.

Background papers:

Nil

contact: Paul Lulham
Mike O'Brien

John Burr
Director of Highways & Transportation

Steve Humphrey
Director of Planning, Housing and
Environmental Health

Screening for equality impacts:		
Question	Answer	Explanation of impacts
a. Does the decision being made or recommended through this paper have potential to cause adverse impact or discriminate against different groups in the community?	No	The measures outlined in this report will be designed to take account of the needs of different groups in the community in accordance with current guidance.

Screening for equality impacts:		
Question	Answer	Explanation of impacts
b. Does the decision being made or recommended through this paper make a positive contribution to promoting equality?	No	See above
c. What steps are you taking to mitigate, reduce, avoid or minimise the impacts identified above?		

In submitting this report, the Chief Officer doing so is confirming that they have given due regard to the equality impacts of the decision being considered, as noted in the table above.

To: Tonbridge & Malling Joint Transportation Board

By: Tim Read, Head of Transportation

Date: 17th March 2014

Subject: B245 London Road Junction with Dry Hill Park Road – Pedestrian Crossing Improvements

Classification: For decision

Summary: This report seeks to finalise options to install improved pedestrian crossing facilities at the junction of the B245 London Road with Dry Hill Park Road, Tonbridge.

1 B245 LONDON ROAD JUNCTION WITH DRY HILL PARK ROAD – PEDESTRIAN CROSSING IMPROVEMENTS

1.1 Progress to Date

- 1.1.1 A number of different proposals have been considered for this site, these have been previously reported to this board.
- 1.1.2 An options report was commissioned. This was intended to review all previous options with the exception of the full signalisation scheme. The review was due, largely to on-going requests for pedestrian crossing improvements from Tonbridge School and also in light of recent changes to the guidance for setting local speed limits as of January 2013.
- 1.1.3 The options report identified four options
- Do nothing – the current safety record does not indicate a pedestrian concern, there are already pedestrian facilities in the vicinity, though these are slightly off of the desire line. Pedestrians make the decision on when it is safe to cross.
 - Zebra crossing with banned left turn – This may be unpopular with local residents, is not supported by Kent Police and removes some responsibility from the pedestrians.
 - Pedestrian refuge with banned left turn – This would be unpopular with users of the sports facility. Large vehicles would not be able to turn left when leaving the sports grounds and would have to travel into Tonbridge to turn around, again Kent police did not support the banned left turn out of Dry Hill Park Road.

- Variable speed limit – It is anticipated this would have little effect in addressing the excess approach speeds in the longer term.

1.2.4 The four options were discussed at the last meeting of the board and members resolved that officers would continue to work on solution based on a controlled pedestrian crossing.

1.2 Recent work undertaken

1.2.1 In order to progress the Zebra crossing option on the desire line, a Traffic Regulation Order was proposed and advertised in December 2013. This proposed TRO attracted 9 formal objections including one from Kent Police who did not support the proposal and felt it was unsafe given the approach speeds. In contrast five offers of support were received including one from Tonbridge School.

1.2.2 In light of the lack of support from Kent Police, a meeting was set up in late January between the 2 local County Members, Borough Councillors and officers. The various options were discussed and the technical difficulties and merits with each discussed. The meeting resolved that the only viable option, which would be satisfactory in terms of safety and usage was a Puffin type signal crossing, sited as close to the desire line as possible. County Members have offered a financial contribution from their Members Highway Fund budget.

1.2.3 In early February a site meeting was held between KCC Officers and representatives from Tonbridge School. Verbal agreement on a site for proposed Puffin Crossing was reached. Tonbridge School have since confirm their support in writing and offered a financial contribution towards the cost of the crossing

1.3 Officers recommendation

1.3.1 This site is complex and constrained. The various options previously discussed all have their merits and difficulties. On balance the proposed Puffin Crossing, whilst slightly off the desire line for those pedestrians accessing the sports centre from the Dry Hill Park Road direction still represents the best overall solution and for this reason Officers recommend that this option is progressed.

1.4 Legal Implications

1.4.1 None at this stage

1.5 Financial Considerations

1.5.1 The site currently has a good safety record, however it is clear there remains concern over the use of this site to access the school sports centre. In light of the additional financial support offered, and the likely usage of the site, it is considered this scheme does offer value for money, provided The Tonbridge School do encourage the use of the facility by their pupils.

1.6 Risk Assessment

1.6.1 Not required

1.7 Recommendations

1.7.1 The Board **ENDORSES** the proposed way forward set out in the report.

Contact officer: Michael Heath
Tel: 03000 41 81 81

This page is intentionally left blank



DRY HILL PARK ROAD

BUS STOP & SHELTER
TO BE RELOCATED

LOCATION FOR NEW "PUFFIN" TYPE SIGNAL
CONTROLLED PEDESTRIAN CROSSING

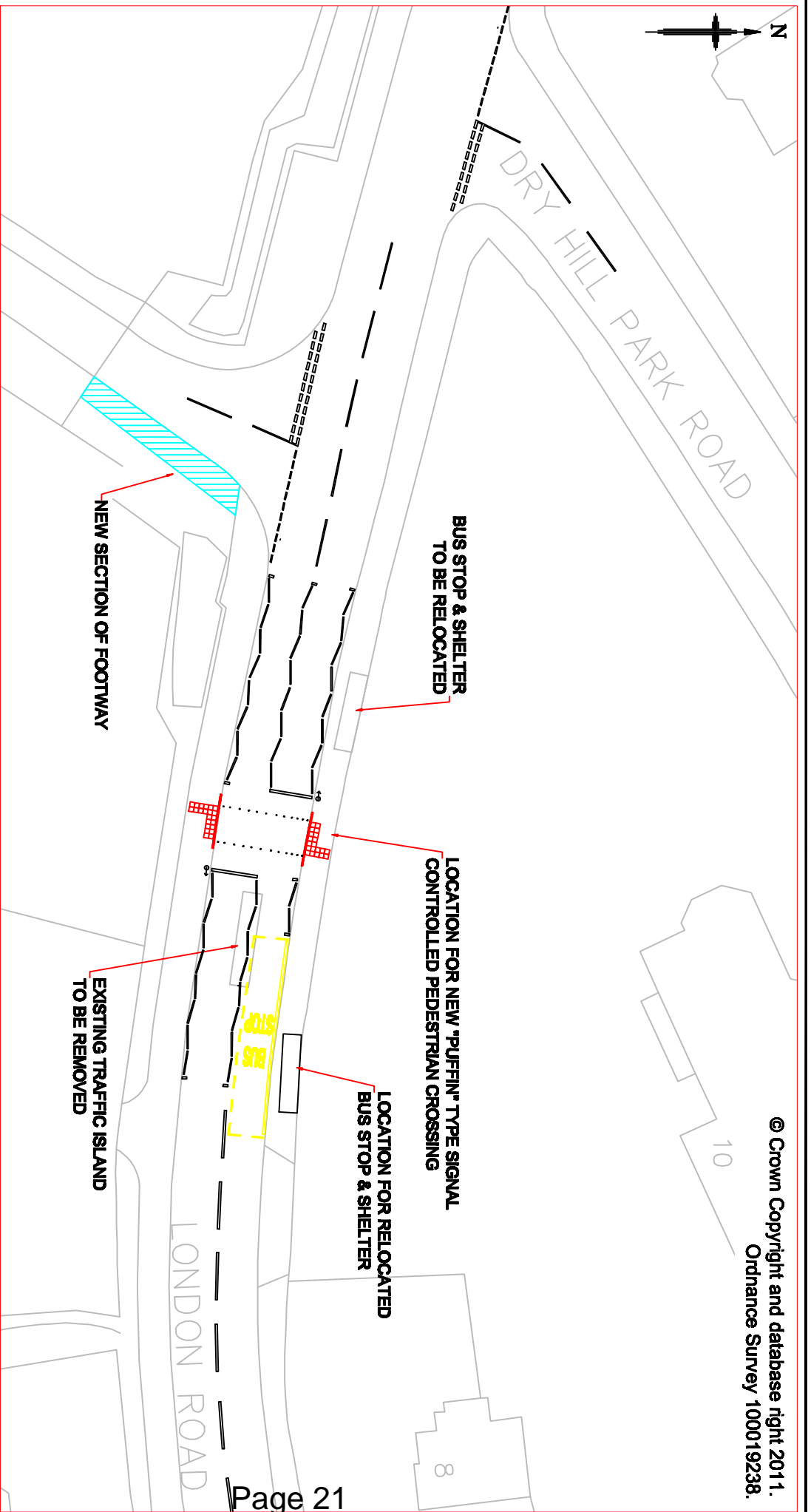
LOCATION FOR RELOCATED
BUS STOP & SHELTER

NEW SECTION OF FOOTWAY

EXISTING TRAFFIC ISLAND
TO BE REMOVED

LONDON ROAD

© Crown Copyright and database right 2011.
Ordnance Survey 100019238.



Kent County Council
Aerial Highway Dept
Hemsted Industrial Estate
Aldford TN24 8AD
Tel: 0200 416161

Project

**B 245 LONDON ROAD
PEDESTRIAN CROSSING**

Drawing title

PROPOSED LAYOUT

FOR CONSULTATION

Drawing status

Scale

Do not scale

Drawing number

TM/CRM/0037/1901

Rev

0

Revision Date

28/02/14

Purpose of revision

This drawing is not to be used in whole or part other than for the intended purpose and project as defined on the drawing. Refer to the contract for full terms and conditions.

Drawn

Checked

Approved

This page is intentionally left blank

To: Tonbridge and Malling Joint Transportation Board

By: Behdad Haratbar, Head of Programmed Works,
Highways and Transportation, Kent County Council

Date: 17 March 2014

Subject: Safe and Sensible Street Lighting - Update

Classification: For Decision

Summary: This report provides an update to Board members on the County Council's implementation of various measures to reduce energy costs, carbon emissions and light pollution associated with its street lights.

Background:

Kent County Council is one of the largest lighting authorities in the UK and has around 120,000 street lights and some 25,000 lit signs and bollards. The annual cost of illuminating these is around £5.8m, a cost that keeps rising in line with the increase in fossil fuel prices. We predict the cost will rise to £6.4m in 14/15. The carbon emitted from producing this energy is around 29,000 tonnes.

In 2011, the County Council resolved to implement a number of measures to reduce energy costs, carbon dioxide emissions and light pollution arising from the provision of street lighting. These measures included a trial switch-off of surplus lights for a twelve month period and the conversion about 70,000 lights to part-night lighting. The County Council submitted a report to the 18 March 2013 meeting of this Board to seek its views on our proposals.

The Board resolved that the sites in Tonbridge and Malling identified for trial switch-off be changed to part-night operation instead, and this work will be carried out alongside part-night conversion works where possible. The Board also supported the exclusion criteria to be applied to our part-night lighting proposals and the proposed hours of switch-off (midnight to 5.30am).

Following the Spring cycle of JTBs, the County Council undertook a public consultation exercise over much of last summer, using our website, radio and newspaper adverts, twitter and leaflets distributed to District Councils offices, libraries etc. Of those that responded, 75% agreed that the County Council should proceed with implementation of this policy.

Detailed analysis identified approximately 6,000 of the County Council's 11,000 street lights in the Borough (mainly in residential and rural roads) for conversion to part-night operation. Conversion works commenced on 20 January and are progressing well. These works should be completed by the time the Board meets.

The County Council will continue to work closely with Kent Police to monitor crime and accidents patterns and will review the lighting requirements if any increase can be attributed to the absence of street lighting.

Recommendations

Members are asked to note the progress made in implementing the various measures that form part of the County Council's Safe and Sensible Street Lighting policy to reduce energy costs, carbon emissions and light pollution.

Background documents: Report to 18 March 2013 meeting of the Tonbridge and Malling Joint Transportation Board "A Common Sense Plan for Safe and Sensible Street Lighting"

Appendices

None

Contact officer:

Alan Casson
Project Manager
Safe and Sensible Street Lighting
Highways and Transportation
03000 418181

From: Andrew Loosemore
Head of Highway Operations

To: Joint Transportation Board

Date: 17 March 2014

Subject: Find and Fix - Weather Damage Repairs 2014

Classification: Unrestricted

Summary:

This report provides details of action being taken by Highways and Transportation to repair the road damage caused by the recent severe weather and flooding.

Recommendation:

Members are asked to note the contents of this report.

1. Introduction

The recent extremely wet weather which has been ongoing since the St. Jude storm in October 2013 which continued through Christmas and January 2014 has led to flooding in many parts of the county. The highway network has suffered damage to the road surface and its sub-structure with culverts and other drainage systems becoming blocked and silted. Some of the county's main roads have experienced weeks of flooding and many communities have been badly affected by the floods resulting in evacuations for some residents.

Following one of the wettest years recorded and the wettest January on record, an increase in road damage was inevitable. Highways and Transportation have therefore prepared for a Find and Fix repair blitz by developing an in-house process with the term contractor to run a weather damage programme engaging additional support from local sub-contractors.

Local Highway Operations teams will identify priority areas and mark up works that need to be done and these will be passed to the contractor. Additional resources have been put in place and work will be completed as soon as possible and as the weather permits. The continuing heavy rainfall severely

hampers works as saturated roads many with standing and running water are unable to receive a permanent repair.

2. Budget

KCC has identified an additional £2.5 million for this work and this will supplement existing funds already allocated for patching works.

The programme of works is on-going and Enterprise, our Highways Maintenance service provider has augmented their own workforce with local contractors. In total five local companies are providing additional teams county wide that are now engaged in and dedicated to delivering the weather damage repair programme.

3. Quality Repairs

We always aim to complete a first-time permanent repair by saw-cutting around the damaged road surface, clearing out the old material, sealing the edges and repairing it with new hot tarmac, which is rolled and compacted to provide a strong level and water-tight finish as it cools. If a road has lots of potholes we may need to complete a larger “patch” in the same way or resurface the whole section of road with specialist machinery to provide a satisfactory long-lasting repair.

The time and care needed to carry out a quality permanent repair often means we need to close a lane or the whole road and this takes time to plan. For emergency potholes and in roads which are saturated or have running water, we may need to make an instant repair by quickly filling the hole without all the preparations described above. We do this to make the road safe to remove the danger and then schedule in a full permanent repair to be carried out as soon as possible thereafter.

It should be noted however, that first time permanent repairs always remain the first choice repair process where it is suitable and practical to do so.

Contact details

Mark Simmons - District Manager

To: Tonbridge & Malling Joint Transportation Board
By: Tim Read, Head of Transportation
Date: 17th March 2014
Subject: Traffic Schemes & MHF Report
Classification: Information only

Summary: This report provides an update on the current and future works relating to section 106 and Local Transport Plan Funded schemes promoted by KCC.

1.1 Introduction

1.1.1 Annex 1 attached to this report provides a summary of the current position on a number of traffic and transportation initiatives in the Borough.

1.1.2 The current Member Highway Fund schemes are shown in Annex 2

2. Legal Implications

1.2.1 None

3. Financial and Value for Money Considerations

1.3.1 As covered with Annex 1 of the report – Traffic Schemes

1.3.2 As covered with Annex 2 of the report – Member Highway Fund

1.4 Risk Assessment

1.4.1 None.

Contact Officer: Andy Padgham/ Michael Heath/ Paul Lulham

Tel: 03000 81 41 41

This page is intentionally left blank

Annex 1 – Developer Funded Schemes Section 106 and Local Transport Plan (LTP) Schemes

Developer	Parish	Description of Works	Current Progress	Anticipated Actions for next 3 months (Prior to next JTB)	Original Allocation 2013-14	Forecast Out-turn 2013-14	Kent County Council H&T Contact 03000 41 81 81
Halling Cement Works	Leybourne	Contribution to widening of M20 Junction 4 Eastern Overbridge	Planning application for smaller-scale mixed-use development granted by Medway Council. Revised S.106 contribution to M20 Junction 4 Eastern Overbridge agreed with KCC and the Highways Agency. Trigger point not yet reached.	Resubmitted Local Pinch Point Funding bid unsuccessful. Alternative bid being submitted to LEP for Single Local Growth Funding.	Nil	Nil	Paul Lulham
Holborough Valley	Snodland	Holborough Valley to Snodland Station Cycle Route (including toucan crossing of A228)	Negotiations ongoing with landowners. Funding secured from developer	Agreement reached with landowners. Programming of cycle route work. Kent Police do not support toucan crossing. Alternative options being considered.	Nil	Nil	Paul Lulham
Holborough Valley	Various	Contribution to A20 Quality Bus Corridor, comprising traffic signal priority, upgraded stops and shelters and junction capacity improvements	Traffic signal upgrades programmed, upgraded stops and real-time bus information programmed. Funding secured from developer	Ongoing delivery of traffic signal upgrades, bus stop improvements and real-time bus information. Consultation on Gighill Road traffic calming modifications completed	£100,000	£100,000	Paul Lulham

				and work being programmed.			
--	--	--	--	----------------------------	--	--	--

Developer	Parish	Description of Works	Current Progress	Anticipated Actions for next 3 months (Prior to next JTB)	Original Allocation 2013-14	Forecast Out-turn 2013-14	Kent County Council H&T Contact 03000 41 81 81
Holborough Valley	Various	Study into feasibility of enhancing Route 151 bus service	S.106 trigger point not yet reached	N/A	Nil	Nil	Paul Lulham
Kings Hill	Various	Contribution to A20 Quality Bus Corridor, comprising traffic signal priority, upgraded stops and shelters and junction capacity improvements	Traffic signal upgrades programmed, upgraded stops and real-time bus information programmed. S.106 trigger point for Kings Hill contribution not yet reached.	Ongoing delivery of traffic signal upgrades, bus stop improvements and real-time bus information, funded by Holborough Valley and Leybourne Chase contributions. Ongoing procurement and programming of upgraded stops and shelters.	Nil	Nil	Paul Lulham
Kings Hill	Kings Hill	Bus Lane on Tower View	S.106 trigger point not yet reached. Kings Hill Phase 3 proposals may warrant revised trigger point.	N/A	Nil	Nil	Paul Lulham

Kings Hill	Mereworth	Improved sight lines at A228 / Kent Street junction and installation of foot/cycleway to Mosquito Road. Potential installation of pelican crossing on A228 and extension of 30mph speed limit.	Outline design being revised following site meeting with local Members. Funding secured from developer	Amey to progress outline design work with a view to public consultation exercise in late Spring / early Summer.	£25,000	£25,000	Paul Lulham
Leybourne Chase	Various	Contribution to A20 Quality Bus Corridor, comprising traffic signal priority, upgraded stops and shelters and junction capacity improvements	Traffic signal upgrades programmed, upgraded stops and real-time bus information programmed. Funding secured from developer.	Ongoing delivery of traffic signal upgrades, bus stop improvements and real-time bus information.	£100,000	£100,000	Paul Lulham
Leybourne Chase	Leybourne	Traffic calming on Birling Road	Traffic and speed surveys completed. Demonstrate that traffic calming not currently required. Contribution to be held in abeyance until development built out further, including completion of upgraded Birling Road access.	N/A	Nil	Nil	Paul Lulham
Leybourne Chase	West Malling	Improved interchange at West Malling Station	Detailed design stage completed. Procurement of Design and Build Contractor ongoing. Funding secured from developer.	Commencement of on-site works.	£250,000	£250,000	Paul Lulham

Leybourne Park	Leybourne	Contribution to widening of M20 Junction 4 Eastern Overbridge	Local Pinch Point Fund bid unsuccessful. Developer has offered to renegotiate S.106 Agreement to facilitate delivery of scheme. Funding not yet claimed from developer.	Resubmitted Local Pinch Point Funding bid unsuccessful. Alternative bid being submitted to LEP for Single Local Growth Funding.	Nil	Nil	Paul Lulham
Peter's Pit	Leybourne	Contribution to widening of M20 Junction 4 Eastern Overbridge	S.106 trigger point not yet reached.	Resubmitted Local Pinch Point Funding bid unsuccessful. Alternative bid being submitted to LEP for Single Local Growth Funding.	Nil	Nil	Paul Lulham
Peter's Pit	Various	Enhancement of Route 155 bus service	S.106 trigger point not yet reached.	N/A	Nil	Nil	Paul Lulham
Peter's Pit	Various	New 'west bank' bus service	S.106 trigger point not yet reached.	N/A	Nil	Nil	Paul Lulham
Ryarsh Brickworks	Various	Traffic calming in Ryarsh and surrounding villages	Development currently stalled. S.106 trigger point not yet reached.	N/A	Nil	Nil	Paul Lulham
Ryarsh Brickworks	Various	Enhancement of Ryarsh bus services, one month bus pass for	Development currently stalled. S.106 trigger point not yet reached.	N/A	Nil	Nil	Paul Lulham

		all new occupiers of the development and all residents of Ryarsh Parish					
Redrow / Town and Country Housing Group	Tonbridge	Priority change at the Medway Wharf Road/Sovereign Way junction	Outline design and public consultation exercise completed. Funding secured from developer.	Detailed design and programming of works.	£50,000	£50,000	Paul Lulham

Developer	Parish	Description of Works	Current Progress	Anticipated Actions for next 3 months (Prior to next JTB)	Original Allocation 2013 - 2014	Forecast Out-turn 2013 - 2014	Kent County Council H&T Contact 03000 41 81 81
B245 London Road/Dry Hill Park Road	Tonbridge	Highway Safety Improvements	An options report has now been produced identifying four options. Officers have been working with Members and Tonbridge School in the light of discussions at the last meeting of the JTB, which resolved that a controlled crossing be progressed	Decision report to March meeting of the Joint Board Members are requested to consider this report and reach a decision based on the recommendation to progress a Puffin type pedestrian crossing	£150K	£50K	Michael Heath
A20/Seven Mile Lane	Wrotham Heath	Junction Improvements - No 2 crash site in the County and a spate of recent incidents have resulted in numerous calls for action from the local community & Councillors	The favoured option of roundabout has been designed. The design pack is with our main contractor and works orders have been raised. Detailed consultation is underway regarding diversion routes and bus services. Pedestrian surveys have been undertaken. This revealed there is currently extremely weak demand for pedestrian crossing movements. Service diversions to Virgin Media and BT services have been avoided, however the final costs of this scheme have	This scheme is anticipated to commence on site 24 March 2014. At this time we expect the duration of the works to be 14 weeks, though it is hoped that this may be less.	£220K	£400K	Michael Heath

			risen considerably				
A229 Blue Bell Hill	Aylesford and Burham	Warning signs and road markings CRM scheme	Signage works complete. Larger scheme principally involves congestion reduction which will result in fewer casualties. For this reason this work will be undertaken through the County Traffic Manager Andrew Westwood	No further involvement at this time from the Traffic Schemes Team. Due to the strategic nature of this work the County Traffic Manager is taking on this work.		£4k	Michael Heath
A25 Ightham By-Pass junction with Oldbury Lane	Ightham	Signs and road markings CRM Scheme	Work complete on site	No further work, continue to monitor		£20k	Michael Heath
A2045 j/w Impton Lane	Aylesford	Signage improvements and visibility improvements CRM	Work complete on site	No further work, continue to monitor		£15k	Michael Heath
West Malling	West Malling	20mph speed limit improvements CRM Scheme	Signage scheme designed, passed to West Malling Parish Council for consideration	Resolve scheme design with Parish Council		£25k	Michael Heath

Contact: Paul Lulham / Michael Heath 03000 41 81 81

This page is intentionally left blank

Annex 2

Member Highway Fund programme update for the Tonbridge and Malling District.

The following schemes are those which have been approved for funding by both the relevant Member and by John Burr, Director of Highways, and is up to date as of 25th February 2014.

The details below are for Highway Schemes only and do not detail contributions Members have made to other groups such as Parish or District Councils.

More detail on their schemes can be accessed by each Member via the online database or by contacting their Member Highway Fund Engineer.

Trudy Dean

Scheme	Status
Installation of HGV prohibition signs – Lunsford Lane, Larkfield	Works Complete
To design and implement various highway improvements in East Malling, this is being carried out with consultation with the East Malling Conservation Group	Currently under design

Sarah Hohler

Scheme	Status
Installation of signage to direct HGVs to the Tesco Distribution Centre – Ham Hill	Handed to our contractor for delivery.
Installation of a VAS – Teston Road, Offham	Handed to our contractor for delivery.
Installation of 'Unsuitable for HVGs' signage in Pilgrims Way, Trottiscliffe from Taylors Lane to Pinefield Grove.	Handed to our contractor for delivery.
Installation of traffic management measures – Trottiscliffe Road, Addington	Handed to our contractor for delivery.

Matthew Balfour

Scheme	Status
Creating a new footway alongside Discovery School in Discovery Drive	Handed to our contractor for delivery.

Peter Homewood

Scheme	Status
Realignment of the white lining to highlight the dual carriageway and signing – Pilgrims Way, Burham	Works Complete
Installation of 2 no. black on white directional signs for the skate park – B2097 Rochester Road	Works Complete
Installation of timber bollards to prevent parking on the	Works Complete

grass verge – Robin Hood Lane	
-------------------------------	--

Valerie Dagger

Scheme	Status
Installation of 2 no. dog bones – Windmill Park, Platt	Works Complete
Introducing a proposed 30 mph speed limit in Long Mill Lane, Dunks Green	Currently out to public consultation.

Richard Long

Scheme	Status
A contribution to PROW to install a steel barrier and 9 no. reinforced concrete bollards – Tudeley Lane near Priory Works	Works Complete
A contribution using the remainder of Mr Long's MHF towards the Dry Hill Park/London Road scheme towards a puffin crossing facility.	Contribution Only

Christopher Smith

Scheme	Status
New bus shelter – Hilden Avenue	Works Complete
Illuminating the pedestrian crossing – The Drive, Pembury Road/Lavender Hill	Handed to our contractor for delivery.

To: Tonbridge & Malling Joint Transportation Board

By: KCC Highways and Transportation

Date: 11th March 2014

Subject: Highway Works Programme 2013/14

Classification: Information Only

Summary: This report updates Members on the identified schemes approved for construction in 2014

1. Introduction

This report provides an update and summarises schemes that have been programmed for delivery in 2014

Footway and Carriageway Improvement Schemes – see Appendix A

Street Lighting – see Appendix B

Traffic Signals – see Appendix C

Bridge Works – see Appendix D

Conclusion

1. This report is for Members information.

Contact Officers:

The following contact officers can be contacted on **0845 8247 800**

Carol Valentine

Mark Simmons

Sue Kinsella

Neil Tree

Russell Boorman

Wendy Bousted

Katie Lewis

Toby Butler

Tony Ambrose

Highway Manager (West)

Tonbridge & Malling District Manager

Street Lighting Manager

Carriageway Surface Treatment

Carriageway Machine Surfacing

Footway Improvement Team Leader

Drainage Manager

Intelligent Transport Systems Manager

Structures Manager

Appendix A – Footway and Carriageway Improvement Schemes

The delivery of these schemes is weather dependent; should it prove not possible to carry out these works on the planned dates, new dates will be arranged and the residents will be informed by a letter drop to their homes.

Surface Dressing – Contact Officer Mr Neil Tree			
Road Name	Parish	Extent of Works	Current Status
Malling Road	Snodland	Leybourne Way southbound from Ham Hill	To be Programmed Spring/Summer
Tonbridge Road	Hildenborough	From its junction with Farm Lane to BP garage	To be Programmed Spring/Summer
London Road	Hildenborough	From its junction with Watts Cross Road to its junction with Nizel's Lane	To be Programmed Spring/Summer
London Road	Tonbridge	From its junction with Dry Hill Park Road to its junction with Stacey Road	To be Programmed Spring/Summer
Brook Street	Tonbridge	From its junction with Masefield Way to its junction with Shakespeare Road	To be Programmed Spring/Summer
London Road	Ryarsh	From Callis Court Nurseries to its junction with Roughetts Road	To be Programmed Spring/Summer
Pilgrims Way	Aylesford	From its junction with Bull Lane to its junction with Rochester Road	To be Programmed Spring/Summer
Teston Road	West Malling	From Offham Village gateway to its junction with St Leonards Street	To be Programmed Spring/Summer
New Road	East Malling & Larkfield	From East Malling Gateway to its junction with Bradbourne Park Road	To be Programmed Spring/Summer
Rochester Road	Burham	From its junction with Bull Lane to its junction with Whitehouse Crescent	To be Programmed Spring/Summer
The Hurst	Plaxtol	From its junction with Swanton Road to its junction with Long Mill Lane	To be Programmed Spring/Summer

Hale Street	East Peckham	From Red House to Harp PH	To be Programmed Spring/Summer
Malling Road	Kings Hill	From its junction with Gibson Drive to layby north of The Street	To be Programmed Spring/Summer
Common Road	Hadlow	From its junction with Carpenters Lane to its junction with A26 Maidstone Road	To be Programmed Spring/Summer
Kemsing Road	Wrotham	From its junction with New House Farm to its junction with Fen Pond Road	To be Programmed Spring/Summer
Micro Asphalt Schemes – Contact Officer Mr Neil Tree			
Road Name	Parish	Extent of Works	Current Status
School Lane	Plaxtol	From the speed limit change to its junction with The Street	To be Programmed Spring/Summer
Pilgrims Way & Battlefields Road	Wrotham	From its junction with Kemsing Road to its junction with Pilgrims Way	To be Programmed Spring/Summer
High Street	East Malling & Larkfield	From its junction with Rock Road to its junction with Mill Street	To be Programmed Spring/Summer
Rochester Road	Aylesford	From its junction with Forstal Road to its junction with Pratling Street	To be Programmed Spring/Summer
Norman Road	West Malling	From its junction with Fartherwell Avenue to its junction with West Street	To be Programmed Spring/Summer
Noble Tree Road	Hildenborough	From its junction with Rings Hill to its junction with B245	To be Programmed Spring/Summer
Hall Road	Wouldham	End to Hall Road	To be Programmed Spring/Summer
Stone Street Road	Ightham	From its junction with Stone Street to its junction with A227 Tonbridge Road	To be Programmed Spring/Summer
Pine Tree Lane	Ightham	From its junction with Stone Street Road to its junction with Coach Road	To be Programmed Spring/Summer

Machine Resurfacing – Contact Officer Mr Russell Boorman			
Road Name	Parish	Extent of Works	Current Status
A228 - 2 roundabouts at the end of Boyle Way	East Peckham	At its junction with Branbridges Road and Seven Mile Lane	Part complete due to Health & Safety Issues. To be re-programmed.
Hall Road	Aylesford	At its junction with Station Road	Programmed to start 24 April 2014
Shipbourne Road	Hadlow	Outside Dene Court	Programmed to start 16 April 2014
Dry Hill Park Road	Tonbridge	From its junction with London Road to its junction with Shipbourne Road	Postponed due to utility works
Branbridges Road	East Peckham	Between Boyle Way and Little Torbay Bridge	Programmed to start 17 April 2014
A228 Ashton Way	West Malling Kings Hill	Approach to the Tower View roundabout	Programmed to start Summer/Autumn 2014
A26 Tonbridge Road	Mereworth	Between the A228 junctions	Programmed to start Summer/Autumn 2014
B245 Tonbridge Road	Hildenborough	Between Foxbush and Noble Tree Road	Programmed to start Summer/Autumn 2014
A20 London Road	Leybourne	At the junction with Castle Way/A228	Programmed to start Summer/Autumn 2014
Footway Improvement - Contact Officer Mrs Wendy Boustead			
Road Name	Parish	Extent and Description of Works	Current Status
Welland Road	Tonbridge	Whole length - Slurry Surfacing	Completed
Longmead Way	Tonbridge	Whole length - Slurry Surfacing	Completed
Kingfisher Road	Larkfield	Whole length - Slurry Surfacing	Completed
Cherwell Close	Tonbridge	Whole Length – Slurry Surfacing	Completed
Beaulieu Road	Tonbridge	Whole Length – Slurry Surfacing	Completed

Appendix B – Street Lighting

Following Structural testing, this year's column replacement budget will be used to replace columns deemed high risk.

Street Lighting Column Replacement – Contact Officer Sue Kinsella			
Road Name	Column Ref	Location	Status
Railway Approach	JRCT001	J/W Barden Road	Completed
Railway Approach	JRCT002	Opposite No 4	Completed
Railway Approach	JRCT003	Adj No 8 LHS	Completed
Railway Approach	JRCT004	Opposite Train Station Entrance Right Hand Side	Awaiting Approval from Network Rail to work on their structure. Programme will be agreed and updated upon confirmation of approval.
Railway Approach	JRCT005	Opposite Train Station Entrance Left Hand Side	Completed
Quarry Hill Road	JQAK001	J/W Waterloo Road Left Hand Side	Completed
Quarry Hill Road	JQAK002	Opposite J/W Priory Road	Completed
Quarry Hill Road	JQAK003	Outside No 13	Completed
Quarry Hill Road	JQAK004	Outside No 6 / 7 Quarry Hill Parade	Completed
Quarry Hill Road	JQAK005	J/W Pembury Road Roundabout	Completed
Quarry Hill Road	JQAK006	Outside No 11 Quarry Hill Parade	Completed
Elm Lane	JEAX001	Opposite Elm Cottage	Completed
Five Oak Green Road	JFAW002	Outside 91 / 93 Tudeley Lane	
Hallsfield Road	JHAK502	J/W Walderslade Woods	Completed
London Road	JLCL006	Opposite Oakdene Café	Completed
Lunsford Lane	JLDD539	J/W Leybourne Way	Completed
Malling Road	JMAQ036	Outside No 66 / Shop	Night Works to be undertaken at location due to parking issues, awaiting programme date.
Whistler Road	JWBD010	Outside No 51	Completed
Hadlow Road East	JHAC	Feeder Pillar for Traffic Island Junction Cuckoo Lane	Currently awaiting programme date, to be tied up with Traffic Management Requirements.
Quarry Hill Road	JQAK545	Sign In Centre Reservation	Still awaiting UKPN Cable Investigation

			works.
Quarry Hill Road	JQAK028	Side of No 3 Quarry Bank	Currently awaiting programme date, to be tied up with Traffic Management Requirements.
Holborough Road	JHCN008	Outside No 82 / 84	Completed
Maidstone Road	JMDJ505	Adjacent J/W Keefe Close Left Hand Side	Completed
Maidstone Road	JMDJ504	Adjacent J/W Keefe Close Left Hand Side	Completed
Primrose Drive	JPCM011	Outside No 54 / 56	Completed
Primrose Drive	JPCM013	Outside No 74 / 76	Completed
Harvest Ridge	JHAU005	Outside No 51	Completed
Harvest Ridge	JHAU006	Adjacent No 37	Completed
Brooklands Road	JBDN003	Outside No 2	Completed
Mills Road	JMCN005	Adjacent J/W A20 London Road	Awaiting Programme Date / Traffic Management
Stainer Road	JSCY010	Outside No 33	Completed
Loampitts Close	JLBN001	Outside No 7	Completed
Saltings Road	JSAD046	Opposite Flats 109 / 117	Completed
Dickens Drive	JDAK004	Opposite Footpath to Morris Close	Completed
High Street	JHBP004	Outside No 43	Completed
Tunbury Avenue	JTEB018	Outside No 157	Completed
Mills Road	JMCN020	J/W Upper Mills Road	Completed
The Bounds	JTAY001	Outside No 1 / 2	Completed
Scott Close	JSAU006	Opposite No 51 On Left Hand Side	Completed
Scott Close	JSAU008	Outside No 40	Completed
Cornwallis Avenue	JHAC329	Outside No 63 Cornwallis Avenue	Completed
Cornwallis Avenue	JHAC030	J/W Estridge Way On Left Hand Side	Completed
Chaucer Way	JCBG009	Opposite J/W Wordsworth Way On Left Hand Side	Completed
Chaucer Way	JCBG010	Side of No 29 Macaulay Close	Completed
Chaucer Way	JCBG026	Opposite J/W Thackeray Road	Completed
Chaucer Way	JCBG030	Rear of No 50 Marlowe Road	Completed
Chaucer Way	JCBG033	Side of No 1 Fielding Drive	Completed
Whistler Road	JWDB011	Outside No 43	Completed
Hallsfield Road	JHAK001	J/W Walderslade Woods Road	Awaiting Programme Date
Robin Hood Lane	JRBB003	Opposite No 103	Awaiting Programme Date
Robin Hood Lane	JRBB005	Outside No 148	Awaiting Programme

			Date
Robin Hood Lane	JRBB009	Outside No 168	Awaiting Programme Date
London Road	JLBX004	Outside No 387	Awaiting Programme Date
London Road	JLBX009	Outside No 405	Awaiting Programme Date
London Road	JLBX004	Outside No 387	Awaiting Programme Date
London Road	JLBX009	Outside No 405	Awaiting Programme Date
Admiral Moore Drive	JAAG009	Opposite Side of No 1 Howick Close	Column installed and temporary connection carried out, awaiting permanent UKPN Transfer of Supply & Removal of Stump
Strawberry Vale	JSDO003	J/W Vale Road	Column installed and temporary connection carried out, awaiting permanent UKPN Transfer of Supply & Removal of Stump
Lodge Oak Lane	JLBQ018	Opposite J/W Dowgate Close	Column installed and temporary connection carried out, awaiting permanent UKPN Transfer of Supply & Removal of Stump
Northwood Drive	JNBD002	Outside No 11	Column installed and temporary connection carried out, awaiting permanent UKPN Transfer of Supply & Removal of Stump
Northwood Drive	JNBC005	Opposite No 61 / 63	Column installed and temporary connection carried out, awaiting permanent UKPN Transfer of Supply & Removal of Stump
Goodworth Road	JGAM003	Rear of No 8 Mountain Close	Column installed and temporary connection carried out, awaiting permanent UKPN Transfer of Supply & Removal of Stump
Goodworth Road	JGAM004	Adjacent to Rear of No 8	Column installed and temporary connection carried out, awaiting permanent UKPN Transfer of Supply & Removal of Stump
Rectory Lane South	JRAF101	Side of No 43 / 1st On	Column installed and

		Footpath to Wheatfield	temporary connection carried out, awaiting permanent UKPN Transfer of Supply & Removal of Stump
Rectory Lane South	JRAF102	Side of No 43 / 2nd On Footpath to Wheatfield	Column installed and temporary connection carried out, awaiting permanent UKPN Transfer of Supply & Removal of Stump
Godden Road	JGAH006	Outside No 39 / 41	Column installed and temporary connection carried out, awaiting permanent UKPN Transfer of Supply & Removal of Stump
Holborough Road	JHCN006	Opposite No 37	Column installed and temporary connection carried out, awaiting permanent UKPN Transfer of Supply & Removal of Stump
Maidstone Road	JMDJ005	Outside No 466	Column installed and temporary connection carried out, awaiting permanent UKPN Transfer of Supply & Removal of Stump
London Road	JLCI004	Outside No 9 Cumberland Court	Column installed and temporary connection carried out, awaiting permanent UKPN Transfer of Supply & Removal of Stump
St Benedict Road	JSER020	Opposite J/W Ritch Road	Column installed and temporary connection carried out, awaiting permanent UKPN Transfer of Supply & Removal of Stump
St Benedict Road	JSER028	Rear of No 236 The Groves	Column installed and temporary connection carried out, awaiting permanent UKPN Transfer of Supply & Removal of Stump
The Slade	JTBZ504	Adjacent Hildenbrook House Left Hand Side	Column installed and temporary connection carried out, awaiting permanent UKPN Transfer of Supply & Removal of Stump
Cottenham Close	JCDY001	Outside No 2	Column installed and

			temporary connection carried out, awaiting permanent UKPN Transfer of Supply & Removal of Stump
Cottenham Close	JCDY003	Outside No 14	Column installed and temporary connection carried out, awaiting permanent UKPN Transfer of Supply & Removal of Stump
York Road	JYAF003	Outside No 16	Column installed and temporary connection carried out, awaiting permanent UKPN Transfer of Supply & Removal of Stump
Higham Lane	JHBZ004	Outside No 75	Column installed and temporary connection carried out, awaiting permanent UKPN Transfer of Supply & Removal of Stump.
Bentley Close	JBBG004	On Footpath Adjacent War Memorial	Column installed and temporary connection carried out, awaiting permanent UKPN Transfer of Supply & Removal of Stump.
Bentley Close	JBBG007	Outside No 3 Clark Mews	Column installed and temporary connection carried out, awaiting permanent UKPN Transfer of Supply & Removal of Stump.
Birch Crescent	JBBL003	Outside No 37	Column installed and temporary connection carried out, awaiting permanent UKPN Transfer of Supply & Removal of Stump
Birch Crescent	JBBL005	Outside No 32	Column installed and temporary connection carried out, awaiting permanent UKPN Transfer of Supply & Removal of Stump
Mills Road	JMCN015	Opposite J/W Burnt Ash Road	Column installed and temporary connection carried out, awaiting permanent UKPN Transfer of Supply & Removal of Stump
Mills Road	JMCN017	J/W Wood Close RHS	Column installed and

			temporary connection carried out, awaiting permanent UKPN Transfer of Supply & Removal of Stump
Sycamore Drive	JSED008	Outside No 1 / 3	Column installed and temporary connection carried out, awaiting permanent UKPN Transfer of Supply & Removal of Stump
The Bounds	JTAY002	Outside No 9 / 10	Column installed and temporary connection carried out, awaiting permanent UKPN Transfer of Supply & Removal of Stump
Catkin Close	JCFT003	Outside Baptist Church	Column installed and temporary connection carried out, awaiting permanent UKPN Transfer of Supply & Removal of Stump
Catkin Close	JCFT007	Outside No 9	Column installed and temporary connection carried out, awaiting permanent UKPN Transfer of Supply & Removal of Stump
Catkin Close	JCFT008	Outside No 19	Column installed and temporary connection carried out, awaiting permanent UKPN Transfer of Supply & Removal of Stump
Catkin Close	JCFT010	Outside No 40	Column installed and temporary connection carried out, awaiting permanent UKPN Transfer of Supply & Removal of Stump
Chippendale Close	JCFO003	Outside No 11	Column installed and temporary connection carried out, awaiting permanent UKPN Transfer of Supply & Removal of Stump
Fernbank Close	JFBU001	Side of No 2	Column installed and temporary connection carried out, awaiting permanent UKPN Transfer of Supply & Removal of Stump
Hawthorns	JHBD002	Outside No 8 / 10	Column installed and

			temporary connection carried out, awaiting permanent UKPN Transfer of Supply & Removal of Stump
Hurst Hill	JHDR006	Outside No 13	Column installed and temporary connection carried out, awaiting permanent UKPN Transfer of Supply & Removal of Stump
Hurst Hill	JHDR007	Between No 21 / 23	Column installed and temporary connection carried out, awaiting permanent UKPN Transfer of Supply & Removal of Stump
Hurst Hill	JHDR022	On Footpath Rear of No 68	Column installed and temporary connection carried out, awaiting permanent UKPN Transfer of Supply & Removal of Stump
Marlow Copse	JMAX004	Outside No 15	Column installed and temporary connection carried out, awaiting permanent UKPN Transfer of Supply & Removal of Stump
Oakleigh Close	JOBH003	Outside No 40	Column installed and temporary connection carried out, awaiting permanent UKPN Transfer of Supply & Removal of Stump
Papion Grove	JPDA004	On Footpath Rear of No 30	Column installed and temporary connection carried out, awaiting permanent UKPN Transfer of Supply & Removal of Stump
Papion Grove	JPDA007	Outside No 4	Column installed and temporary connection carried out, awaiting permanent UKPN Transfer of Supply & Removal of Stump
Taddington Wood Lane	JTAA009	Opposite Rear of No 8 Hurst Hill	Column installed and temporary connection carried out, awaiting permanent UKPN Transfer of Supply & Removal of Stump
Taddington Wood Lane	JTAA014	Rear of No 198 Robin	Column installed and

		Hood Lane	temporary connection carried out, awaiting permanent UKPN Transfer of Supply & Removal of Stump
Tavistock Close	JTEU003	Outside No 17	Column installed and temporary connection carried out, awaiting permanent UKPN Transfer of Supply & Removal of Stump
Tavistock Close	JTEU004	Side of No 36	Column installed and temporary connection carried out, awaiting permanent UKPN Transfer of Supply & Removal of Stump
Tunbury Avenue	JTEB001	J/W Walderslade Woods Road	Column installed and temporary connection carried out, awaiting permanent UKPN Transfer of Supply & Removal of Stump
Tunbury Avenue	JTEB002	Rear of No 36 Oaks Dean	Column installed and temporary connection carried out, awaiting permanent UKPN Transfer of Supply & Removal of Stump
Tunbury Avenue	JTEB012	Opposite Side of No 1 Chippendale Close	Column installed and temporary connection carried out, awaiting permanent UKPN Transfer of Supply & Removal of Stump
Tunbury Avenue	JTEB021	Outside No 78 / 80	Column installed and temporary connection carried out, awaiting permanent UKPN Transfer of Supply & Removal of Stump
Tunbury Avenue	JTEB022	Outside No 127 / 129	Column installed and temporary connection carried out, awaiting permanent UKPN Transfer of Supply & Removal of Stump
Valley Rise	JVAE003	On Footpath Side No 11	Column installed and temporary connection carried out, awaiting permanent UKPN Transfer of Supply & Removal of Stump
Walsham Road	JWDB001	Outside No 1	Column installed and

			temporary connection carried out, awaiting permanent UKPN Transfer of Supply & Removal of Stump
Walsham Road	JWDB007	Outside No 38	Column installed and temporary connection carried out, awaiting permanent UKPN Transfer of Supply & Removal of Stump
Woodbury Road	JWDC002	Outside No 7	Column installed and temporary connection carried out, awaiting permanent UKPN Transfer of Supply & Removal of Stump
Woodbury Road	JWDC009	On Footpath Outside No 35	Column installed and temporary connection carried out, awaiting permanent UKPN Transfer of Supply & Removal of Stump
Woodbury Road	JWDC011	Outside No 14	Column installed and temporary connection carried out, awaiting permanent UKPN Transfer of Supply & Removal of Stump
Darenth Avenue	JDAC003	Rear of No 70 Whitelake Road	Order Issued & Awaiting Programme Date
Blackthorn Drive	JBCA003	Outside No 20 / 22	Order Issued & Awaiting Programme Date
Cherry Orchard	JCBI002	Outside No 13	Order Issued & Awaiting Programme Date
Cherry Orchard	JCBI003	Outside No 21	Order Issued & Awaiting Programme Date
Cherry Orchard	JCBI008	Outside No 35	Order Issued & Awaiting Programme Date
Kiln Barn Road	JKAL003	Opposite J/W Cherry Orchard	Order Issued & Awaiting Programme Date
Nursery Road	JNBH006	Opposite No 12	Order Issued & Awaiting Programme Date
Oak Drive	JOAB005	Outside No 21 / 23	Order Issued & Awaiting Programme Date
Oak Drive	JOAB007	Outside No 35 / 37	Order Issued & Awaiting Programme Date
Oak Drive	JOAB009	Opposite J/W Chestnut Walk	Order Issued & Awaiting Programme Date
Oak Drive	JOAB010	Outside No 53 / 55	Order Issued & Awaiting Programme Date
Oak Drive	JOAB011	Outside No 65 / 67	Order Issued & Awaiting Programme Date
Oak Drive	JOAB012	Outside No 66 / 68	Order Issued & Awaiting Programme Date

			Programme Date
Primrose Drive	JPCM015	Opposite No 105 / 107	Order Issued & Awaiting Programme Date
St Peters Road	JSCS009	Outside No 28	Order Issued & Awaiting Programme Date
St Peters Road	JSCS011	Outside No 15	Order Issued & Awaiting Programme Date
Streamside	JSEZ002	Opposite Side of No 1	Order Issued & Awaiting Programme Date
Cranford Road	JCEG017	Outside No 9	Order Issued & Awaiting Programme Date
Dodd Road	JDAN006	Outside No 9 / 11	Order Issued & Awaiting Programme Date
Grainger Walk	JGBJ005	Outside No 29	Order Issued & Awaiting Programme Date
Brook Street	JBDI003	Outside No 8 / 10	Order Issued & Awaiting Programme Date
Barrie Drive	JBEJ001	Outside No 2	Order Issued & Awaiting Programme Date
Barrie Drive	JBEJ004	On Footpath Outside No 7	Order Issued & Awaiting Programme Date
Chaucer Way	JCBG032	Opposite JW Betjeman Close	Order Issued & Awaiting Programme Date
Bancroft Road	JBAH001	Outside No 7	Order Issued & Awaiting Programme Date
Borough Green Road	JWCQ003	Outside Oak Trees	Order Issued & Awaiting Programme Date
New Walk	JNAM001	Outside No 3 / 4	Order Issued & Awaiting Programme Date
West Street	JWAZ003	Opposite No 61	Order Issued & Awaiting Programme Date
Burnt Ash Road	JBEZ003	Outside HSS Hire on Right Hand Side	Order Issued & Awaiting Programme Date
Burnt Ash Road	JBEZ004	Outside Renualt Service Centre	Order Issued & Awaiting Programme Date
Kits Coty Slip Road	JCBD021	4 th Column On Slip Road North Bound	Order Issued & Awaiting Programme Date
Mills Road	JMCN030	Outside Alpha Heating	Order Issued & Awaiting Programme Date
St Michaels Close	KSDZ011	Opposite Unit EE	Order Issued & Awaiting Programme Date
St Michaels Close	KSDZ013	Outside Unit HH	Order Issued & Awaiting Programme Date
Catkin Close	JCFT002	Opposite No 64	Order Issued & Awaiting Programme Date
Common Road	JCEW002	Opposite No 6 / 8	Order Issued & Awaiting Programme Date
Fernbank Close	JFBU004	Outside No 9	Order Issued & Awaiting Programme Date
Fostington Way	JFBI004	Between Walderslade Woods Road & Fernbank Close Junction	Order Issued & Awaiting Programme Date
Fostington Way	JFBI012	JW Robin Hood Lane	Order Issued & Awaiting

		Lower On Left Hand Side	Programme Date
Impton Lane	KIAC004	Opposite J/W Sylvan Glade	Order Issued & Awaiting Programme Date
Impton Lane	KIAC009	Rear of No 6 Olivine Close	Order Issued & Awaiting Programme Date
Impton Lane	KIAC014	J/W Brockbank Close On Right Hand Side	Order Issued & Awaiting Programme Date
Impton Lane	KIAC026	Opposite J/W Feldspar Close	Order Issued & Awaiting Programme Date
Lower Warren Road	JLCZ008	J/W Chatham Road Off Slip	Order Issued & Awaiting Programme Date
Maidstone Road	JMDJ018	J/W Barling Close On Left Hand Side	Order Issued & Awaiting Programme Date
Papion Grove	JPDA006	Outside No 2	Order Issued & Awaiting Programme Date
Robin Hood Lane	JRBB007	Opposite No 137	Order Issued & Awaiting Programme Date
Taddington Wood Lane	JTAA001	J/W Walderslade Woods Road	Order Issued & Awaiting Programme Date
Taddington Wood Lane	JTAA008	Opposite Rear of No 6 Hurst Hill	Order Issued & Awaiting Programme Date
Thorn Close	JTFH001	J/W Maidstone Road	Order Issued & Awaiting Programme Date
Tunbury Avenue	JTEB015	Opposite No 163	Order Issued & Awaiting Programme Date
Tunbury Avenue	JTEB023	Adjacent No 70 On Right Hand Side	Order Issued & Awaiting Programme Date
Walderslade Woods Road	KWAB023	Between Forestdale Road & Wildfell Close	Order Issued & Awaiting Programme Date
Walsham Road	JWDB005	Outside No 40	Order Issued & Awaiting Programme Date
Walsham Road	JWDB006	Outside No 12	Order Issued & Awaiting Programme Date
The Ridgeway	JTBW001	Outside No 1 / 3	Order Issued & Awaiting Programme Date
New Road	JNAJ009	Outside No 57	Order Issued & Awaiting Programme Date
New Road	JNAJ015	Opposite No 101	Order Issued & Awaiting Programme Date
Pear Tree Avenue	JPAO002	Outside No 6	Order Issued & Awaiting Programme Date
Primrose Drive	JPCM004	Outside No 13 / 15	Order Issued & Awaiting Programme Date
The Stream	JTES002	Outside No 30	Order Issued & Awaiting Programme Date
Hadlow Road East	JHAC017	Outside No 1 Cornwallis Avenue	Order Issued & Awaiting Programme Date
Hadlow Road East	JHAC019	Opposite No 7 Cornwallis Avenue	Order Issued & Awaiting Programme Date
Hadlow Road East	JHAC015	J/W Higham Lane On Right Hand Side	Order Issued & Awaiting Programme Date
Hadlow Road East	JHAC004	Adjacent No 117	Order Issued & Awaiting Programme Date

Turner Road	JTEC101	On Footpath Rear of No 95	Order Issued & Awaiting Programme Date
Coleridge Close	JCES002	On Footpath Outside No 12	Order Issued & Awaiting Programme Date
Vale Road	JVAC007	Opposite Fire Station On Left Hand Side	Order Issued & Awaiting Programme Date
Vale Road	JVAC009	Outside Unit 422	Order Issued & Awaiting Programme Date
Vale Road	JVAC010	Adjacent Unit 195	Order Issued & Awaiting Programme Date
Vale Road	JVAC011	Adjacent Unit 408	Order Issued & Awaiting Programme Date
Vale Road	JVAC014	J/W Sanderson Way On Left Hand Side	Order Issued & Awaiting Programme Date
Vale Road	JVAC015	Opposite J/W Sanderson Way	Order Issued & Awaiting Programme Date
Malling Road	JMAQ009	Opposite 276	Order Issued & Awaiting Programme Date
Malling Road	JMAQ013	Outside No 235	Order Issued & Awaiting Programme Date
Simpson Road	JSBS022	Adjacent No 15	Order Issued & Awaiting Programme Date
Glebe Meadow	JGAG003	Outside Hall	Order Issued & Awaiting Programme Date
Glebe Meadow	JGAG007	Outside No 13	Order Issued & Awaiting Programme Date
Glebe Meadow	JGAG010	Outside No 20	Order Issued & Awaiting Programme Date
Harvest Ridge	JHAU001	Outside No 3	Order Issued & Awaiting Programme Date
Harvest Ridge	JHAU002	Opposite No 57	Order Issued & Awaiting Programme Date
Harvest Ridge	JHAU003	Side of No 57	Order Issued & Awaiting Programme Date
Harvest Ridge	JHAU007	Outside No 32	Order Issued & Awaiting Programme Date
Harvest Ridge	JHAU009	Outside No 17 / 18	Order Issued & Awaiting Programme Date
Norman Road	JNAX011	Opposite No 81	Order Issued & Awaiting Programme Date
Old Barn Road	JOAG009	Rear of No 24	Order Issued & Awaiting Programme Date
Old Barn Road	JOAG010	Footpath Adjacent Chimneys Car Park	Order Issued & Awaiting Programme Date
Old Barn Road	JOAG012	Rear of No 46 Harvest Ridge	Order Issued & Awaiting Programme Date
Oxley Shaw Lane	JOBG025	Side of No 31 Bridgewater Place	Order Issued & Awaiting Programme Date
Sandown Road	JSAE002	Outside No 6 / 8	Order Issued & Awaiting Programme Date
Woodland Close	JWCG006	Outside No 15	Order Issued & Awaiting Programme Date
Fartherwell Avenue	JSAE001	Side of No 8 Fartherwell Avenue	Order Issued & Awaiting Programme Date

Impton Lane	KIAC033	Rear of No 5 Podkin Wood	Order Issued & Awaiting Programme Date
Impton Lane	KIAC029	Opposite Side of No 17 Podkin Wood	Order Issued & Awaiting Programme Date
Impton Lane	KIAC025	Opposite J/W The Flintstones	Order Issued & Awaiting Programme Date
Impton Lane	KIAC018	J/W Bracken Hill On Right Hand Side	Order Issued & Awaiting Programme Date
Impton Lane	KIAC016	Rear of No 15 Godstone Walk	Order Issued & Awaiting Programme Date
Impton Lane	KIAC015	J/W Brockbank Close On Left Hand Side	Order Issued & Awaiting Programme Date
Impton Lane	KIAC001	J/W Walderslade Woods Road (East)	Order Issued & Awaiting Programme Date
Dryland Road	JDAZ008	Outside No 44 / 46	Order Issued & Awaiting Programme Date
Bridge Place	JBGJ002	Opposite No 24	Order Issued & Awaiting Programme Date
Bramley Way	JBFW001	Opposite No 49	Order Issued & Awaiting Programme Date
Discovery Drive	JDBP024	J/W Fortune Way Roundabout	Order Issued & Awaiting Programme Date
Sheldon Way	JSBJ005	O/S Unit K2M	Order Issued & Awaiting Programme Date
Locksley Close Footpath	JLDL011	On Footpath Side of No 180 Robin Hood Lane	Order Issued & Awaiting Programme Date
Chapel Street	JCAZ003	Opposite No 16 / 18	Order Issued & Awaiting Programme Date
Chapel Street	JCAZ006	Outside No 43	Order Issued & Awaiting Programme Date
Chapman Way	JCBA023	Opposite J/W Winterfield Lane	Order Issued & Awaiting Programme Date
Dickens Drive	JDAK003	Opposite Side of No 1 Morris Close	Order Issued & Awaiting Programme Date
Howard Road	JHDA003	Outside No 23	Order Issued & Awaiting Programme Date
Lister Close	JLBK001	Outside No 6	Order Issued & Awaiting Programme Date
Mill Street	JMCL002	Opposite No 15	Order Issued & Awaiting Programme Date
Mill Street	JMCL015	J/W Elizabeth Smiths Court	Order Issued & Awaiting Programme Date
Mill Street	JMCL003	Outside No 21	Order Issued & Awaiting Programme Date
Ruskin Close	JRCK001	Outside No 6	Order Issued & Awaiting Programme Date
Temple Way	JTAI002	Outside No 13	Order Issued & Awaiting Programme Date
Temple Way	JTAI004	Outside No 23 / 25	Order Issued & Awaiting Programme Date
Brookmead	JBDO018	Outside No 36	Order Issued & Awaiting Programme Date
Barden Road	JBAM002	Outside No 18	Order Issued & Awaiting Programme Date

Waterloo Road	JWAQ010	Opposite JW Albert Road	Order Issued & Awaiting Programme Date
Waterloo Road	JWAQ011	Outside 1A / 2	Order Issued & Awaiting Programme Date
New Hythe Lane	JNAG005	Opposite No 77 / 79	Order Issued & Awaiting Programme Date
Thackeray Road	JTAS004	Outside No 12	Order Issued & Awaiting Programme Date
Thackeray Road	JTAS005	Outside No 58	Order Issued & Awaiting Programme Date
Thackeray Road	JTAS021	Rear of No 48 Keats Road	Order Issued & Awaiting Programme Date
Cygnets Close	JCER001	Opposite No 2	Order Issued & Awaiting Programme Date
Falcon Green	JFCG001	On Footpath Outside No 7	Order Issued & Awaiting Programme Date
Heron Road	JHBL003	Outside No 37	Order Issued & Awaiting Programme Date
Heron Road	JHBL004	Outside No 51	Order Issued & Awaiting Programme Date
Kingfisher Road	JKAP002	Outside No 2 / 4	Order Issued & Awaiting Programme Date
Kingfisher Road	JKAP008	Outside No 62	Order Issued & Awaiting Programme Date
Kingfisher Road	JKAP021	Outside No 112	Order Issued & Awaiting Programme Date
Laburnum Drive	JLAB001	Outside No 2 / 4	Order Issued & Awaiting Programme Date
Laburnum Drive	JLAB002	Outside No 14 / 16	Order Issued & Awaiting Programme Date
Laburnum Drive	JLAB003	Outside No 26/28	Order Issued & Awaiting Programme Date
Laburnum Drive	JLAB004	Outside No 19	Order Issued & Awaiting Programme Date
Laburnum Drive	JLAB005	Outside No 46	Order Issued & Awaiting Programme Date
Larkfield Road	JLAM004	End of Cul-De-Sac	Order Issued & Awaiting Programme Date
Plover Road	JPBW001	Opposite No 9	Order Issued & Awaiting Programme Date
Plover Road	JPBW005	Opposite J/W Merlin Avenue	Order Issued & Awaiting Programme Date
Redwing Close	JRAK002	Outside No 10	Order Issued & Awaiting Programme Date
Redwing Close	JRAK003	On Footpath Adjacent to M20 Footbridge	Order Issued & Awaiting Programme Date
Swallow Road	JSDU008	Outside No 86	Order Issued & Awaiting Programme Date
Swallow Road	JSDU020	Outside No 27	Order Issued & Awaiting Programme Date
Crown Point	JCEP001	Outside Crown Point Inn Public House	Order Issued & Awaiting Programme Date
Holborough Road	JHCP008	Outside No 193	Order Issued & Awaiting Programme Date

Ostlers Court	JOB001	Outside No 1 / 2	Order Issued & Awaiting Programme Date
Rocfort Road	JRBG010	Opposite J/W Saltings Road	Order Issued & Awaiting Programme Date
Saltings Road	JSAD015	Outside No 152	Order Issued & Awaiting Programme Date
Saltings Road	JSAD062	Side of No 2 Combe Close	Order Issued & Awaiting Programme Date
Paddlesworth Road	JPAA004	Adjacent J/W St Benedict Road On Left Hand Side	Order Issued & Awaiting Programme Date
St Benedict Road	JSER019	Side of No 56 Ritch Road	Order Issued & Awaiting Programme Date
Birling Road	JTBN001	Outside No 240	Order Issued & Awaiting Programme Date
Peregrine Road	JPDQ004	Side of No 1 Admiral Way	Order Issued & Awaiting Programme Date
Saxon Close	JSFR007	Outside No 14	Order Issued & Awaiting Programme Date
Station Road	JSDH006	J/W Entrance to Aylesford Newsprint	Order Issued & Awaiting Programme Date
Station Road	JSDH015	Outside No 218	Order Issued & Awaiting Programme Date
Station Road	JSDH033	Adjacent to Level Crossing	Order Issued & Awaiting Programme Date
Catkin Close	JCFT005	Outside Tunbury Hall	Order Issued & Awaiting Programme Date
Sevenoaks Road	JBCK011	Outside No 84 / 86	Order Issued & Awaiting Programme Date
Maidstone Road	JMAL014	Opposite J/W The Ferns	Order Issued & Awaiting Programme Date
Maidstone Road	JMAL015	Side of No 1 The Ferns	Order Issued & Awaiting Programme Date
Hadlow Road	JHAB003	Outside No 6	Order Issued & Awaiting Programme Date
Hadlow Road	JHAB009	Outside No 25b	Order Issued & Awaiting Programme Date
Higham Lane	JHBY040	Adjacent No 119	Order Issued & Awaiting Programme Date
Shipbourne Road	JSBO028	Outside No 196 On Right Hand Side	Order Issued & Awaiting Programme Date
Shipbourne Road	JSBO038	Opposite No 216	Order Issued & Awaiting Programme Date
Shipbourne Road	JSBO039	Opposite J/W Pinnacles Close On Left Hand Side	Order Issued & Awaiting Programme Date
Shipbourne Road	JSBO040	Outside No 218/220	Order Issued & Awaiting Programme Date
Shipbourne Road	JSBO042	Outside No 232	Order Issued & Awaiting Programme Date
Shipbourne Road	JSBO045	Outside No 248	Order Issued & Awaiting Programme Date
Shipbourne Road	JSBO048	Outside No 325	Order Issued & Awaiting Programme Date
Shipbourne Road	JSBO049	Opposite No 327	Order Issued & Awaiting Programme Date

Shipbourne Road	JSBO051	Outside No 333	Order Issued & Awaiting Programme Date
Shipbourne Road	JSBO053	Outside No 339	Order Issued & Awaiting Programme Date
Shipbourne Road	JSBO056	Outside No 280	Order Issued & Awaiting Programme Date
Shipbourne Road	JSBO057	Outside No 351 / 353	Order Issued & Awaiting Programme Date
Shipbourne Road	JSBO058	Outside No 288	Order Issued & Awaiting Programme Date
Shipbourne Road	JSBO059	Outside No 361	Order Issued & Awaiting Programme Date
Shipbourne Road	JSBO060	J/W Bishops Oak Ride On Left Hand Side	Order Issued & Awaiting Programme Date
Shipbourne Road	JSBO061	Opposite J/W Bishops Oak Ride	Order Issued & Awaiting Programme Date
Shipbourne Road	JSBO062	J/W Bishops Oak Ride On Right Hand Side	Order Issued & Awaiting Programme Date
Shipbourne Road	JSBO063	J/W Harvest Road On Right Hand Side	Order Issued & Awaiting Programme Date
Cherwell Close	JCBJ103	On Brunges Walk Footpath to Darent Avenue	Order Issued & Awaiting Programme Date
Correnden Road	JCDW006	Side of Number 22	Order Issued & Awaiting Programme Date
Correnden Road	JCDW008	Outside No 28	Order Issued & Awaiting Programme Date
Correnden Road	JCDW011	Outside No 36 / 38	Order Issued & Awaiting Programme Date
London Road	JLBU037	Opposite J/W Farm Lane	Order Issued & Awaiting Programme Date
Welland Road	JWAV003	Outside No 1 / 2 Maylam Court	Order Issued & Awaiting Programme Date
Welland Road	JWAV014	Outside No 115	Order Issued & Awaiting Programme Date
Welland Road	JWAV004	Opposite No 9 / 10 Maylam Court	Order Issued & Awaiting Programme Date
Welland Road	JWAV005	Side of No 11 / 17 Farleigh Court	Order Issued & Awaiting Programme Date
Welland Road	JWAV006	Opposite Fairlight Court Car Park Area	Order Issued & Awaiting Programme Date
Cottenham Close	JCDY002	Outside No 6	Order Issued & Awaiting Programme Date
Maidstone Road	JTCU009	O/S Tresillian	Order Issued & Awaiting Programme Date
Tonbridge Road	JTDB017	Outside No 240	Order Issued & Awaiting Programme Date
Guestwick	JGBF001	Outside No 3	Order Issued & Awaiting Programme Date
Stainer Road	JSCY002	Outside No 2 / 4	Order Issued & Awaiting Programme Date
Stainer Road	JSCY010	Outside No 33	Order Issued & Awaiting Programme Date

Vaughan Avenue	JVAH001	Outside No 22	Order Issued & Awaiting Programme Date
Douglas Road	JDAO020	On Footpath Opposite No 120	Order Issued & Awaiting Programme Date
Eagle Close	JEAA008	Outside No 46	Order Issued & Awaiting Programme Date
Cannon Lane	JCAC001	Side of No 70 Hadlow Road	Order Issued & Awaiting Programme Date
Cannon Lane	JCAC002	Adjacent J/W Hadlow Road	Order Issued & Awaiting Programme Date
Cannon Lane	JCAC003	Side of No 5 Brook Lane	Order Issued & Awaiting Programme Date
Cannon Lane	JCAC004	J/W Brook Lane On Right Hand Side	Order Issued & Awaiting Programme Date
Cannon Lane	JCAC008	J/W Swanmead Way On Right Hand Side	Order Issued & Awaiting Programme Date
Gorham Drive	JGAO008	Outside No 11	Order Issued & Awaiting Programme Date
Morley Road	JMCS002	Opposite Volkswagon Garage On Left Hand Side	Order Issued & Awaiting Programme Date
Pembury Road	JPAT002	Opposite J/W St Marys Road	Order Issued & Awaiting Programme Date
Pembury Road	JPAT012	Outside No 50	Order Issued & Awaiting Programme Date
Pembury Road	JPAT014	Outside No 2 / 3 Pembury House	Order Issued & Awaiting Programme Date
Pembury Road	JPAT021	Adjacent to No 157A On Right Hand Side	Order Issued & Awaiting Programme Date
Pembury Road	JPAU001	3 rd Lamp Column On Right Hand Side J/W Tudeley Lane	Order Issued & Awaiting Programme Date
Avon Close	JABG003	Outside No 20	Order Issued & Awaiting Programme Date
Avon Close	JABG007	Outside No 59 / 61 Derwent Close	Order Issued & Awaiting Programme Date
Bishops Oak Ride	JBBU005	Outside No 98	Order Issued & Awaiting Programme Date
Bishops Oak Ride	JBBU009	Outside No 160	Order Issued & Awaiting Programme Date
Colne Road	JCCY004	On Footpath Outside No 11	Order Issued & Awaiting Programme Date
Greenfirth Drive	JGBB002	Outside No 15	Order Issued & Awaiting Programme Date
Medina Road	JMBQ001	Adjacent No 8 On Left Hand Side	Order Issued & Awaiting Programme Date
Norton Crescent	JNBE006	Outside No 30 / 32	Order Issued & Awaiting Programme Date Order Issued & Awaiting Programme Date
Rother Road	JRCB004	Outside No 8	Order Issued & Awaiting Programme Date
St Bernards Road	JSCK010	Side of No 55	Order Issued & Awaiting Programme Date

Waveney Road	JWAR001	J/W Darenth Avenue	Order Issued & Awaiting Programme Date
London Road	JLCL020	Opposite Wrotham Villa	Order Issued & Awaiting Programme Date

Appendix C – Traffic Signals

There is a programme of scheduled maintenance to refurbish life expired traffic signal equipment across the county based upon age and fault history. The delivery of these schemes is dependent upon school terms and holiday periods; local residents, businesses and schools will be informed verbally and by a letter drop of the exact dates when known.

Traffic Systems - <i>Contact Officer: Toby Butler</i>		
Location	Description of Works	Current Status
A227 Shipbourne Road near White Cottage Road, Tonbridge.	Refurbishment of traffic signal controlled crossing.	17 th March to 4 th April 2014

Appendix D – Bridge Works

Bridge Works – Contact Officer Tony Ambrose			
Road Name	Parish	Description of Works	Current Status
Victoria Road	Hadlow	Replacing Golden Green Bridge	Works commenced week beginning 28th October 2013. Due for completion by April 2014
High Street	Tonbridge	Waterproofing Tonbridge Little bridge deck. South bound diversion.	Programmed to Start 10 th March for 3 weeks

1.1 Legal Implications

1.1.1 Not applicable.

1.2 Financial and Value for Money Considerations

1.2.1 Not applicable.

1.3 Risk Assessment

1.3.1 Not applicable.

Contact: Carol Valentine / Mark Simmons 03000 41 81 81

This page is intentionally left blank